



SRM Construction, Inc.
 111 North Post Suite 200
 Spokane, Washington 99201-4911
 P: (509)-455-5477
 F: 509-838-0933

Project: CP-SRM San Jose
 3315 Almaden Expressway
 San Jose, California 95118

Daily Log: Tuesday 4/9/2024



Daily Log Completed

The Daily Log was completed by Brian Hutchison on Mon, Apr 15, 2024 at 02:24 PM PDT.

WEATHER REPORT

| Temperature | | | Precipitation Since | | | Humidity | | | | Windspeed | | |
|-------------|------|------|---------------------|------------|------------|----------|-----|------|------|-----------|-------|-------|
| Low | High | Avg | Midnight | 2 Days Ago | 3 Days Ago | Low | Avg | High | Dew | Avg | Max | Gust |
| 45°F | 79°F | 61°F | 0.00 in. | 0.00 in. | 0.00 in. | 28% | 56% | 84% | 43°F | 1.2 mph | 3 mph | 5 mph |

DAILY SNAPSHOT

| 06:00 AM | 09:00 AM | 12:00 PM | 03:00 PM | 06:00 PM | 09:00 PM |
|---------------|---------------|---------------|---------------|---------------|---------------|
| Clear 46°F | Clear 56°F | Clear 72°F | Clear 78°F | Clear 76°F | Clear 63°F |

OBSERVED WEATHER CONDITIONS

| No. | Time Observed | Weather Delay | Sky | Temp | Average | Precipitation | Wind | Ground/Sea |
|-----|---------------|---------------|-----|------|---------|---------------|------|------------|
| 1 | 09:55:00 AM | No | | | | | | |


MANPOWER LOG

97 Workers | 776.0 Man Hours

| No. | Contact/Company | Workers | # | Man Hours | Location |
|-----|------------------|---------|-----|-----------|------------------|
| 1 | SRM Construction | 6 | 8.0 | 48.0 | Novelle San Jose |

Comments: We continue to prep and clean for gypcrete in zone C on 2nd, 3rd and 4th floors. Once gypcrete is complete next week we will keep laborers onsite to help clean up the rest of the site that has been over looked. We also walked ADCO is working on Level 2,3,4 Zones C/D: Installing backing in progress. Level 2,3,4 Zones C/D: Framing fire doors at corridors are done, waiting for insulation to proceed to hang drywall on it. Exterior, Level 1, Zone A: Ext. Soffits Waiting for insulation inspection and all trades done to hang dens glass on it. Exterior, Level 1, Zone B: Ext. Soffits Waiting for insulation inspection and all trades done to hang dens glass on it. Exterior, Level 1, Zone C: Ext. Soffits Waiting for insulation inspection and all trades done to hang dens glass on it. Exterior, Level 1, Zone D: Ext. Soffits Waiting for insulation inspection and all trades done to hang dens glass on it. Exterior, all levels, all zone A: Wing walls, Dens glass, done. Exterior, all levels, Zones B,C,D: Exterior, on wing walls waiting for insulation to proceed to hang dens glass on it.

Cleaning all levels where we are working in progress. Sld's team to go over the progress of the repairs they have been conducting on the 1st and 2nd levels. We walked the 2nd floor the areas they have been working on and found that they were still out of tolerance. Floors need to be flat within 1/4" per 10'. We will give them another opportunity to grind and fill areas. We have ordered 5 Labor Max workers to ensure that the areas has been cleaned and free of major obstructions. They will ramp up their production on Monday. AFS continues to work through corridors in Zone A 2nd and 3rd floor. In preparation of insulation and R/C Channel installation. CJS continues to run water supplies through zone C and D. They have completed roof drain throughout the entire building. Kodiak has run all insulation and lower membrane throughout the final zone, Zone D. They need to weld TPO joints and finish final details of roofing to complete their job. They should finish late tomorrow. Kenyon continues to run Tyvek around the building. They can only complete 1st through 3rd floors. They are way out in front of zone A. They have made it all the way through the courtyard and around to the New Berry side of the building. Reaco continues to install flashing and z ducts throughout the building. Skyline was out verifying knife plates for the bolt on balconies. Tigre continues with monocoat fireproofing to stair and rated areas continues. We have been spraying areas and inspecting the areas every other day. Lighthouse continues to install windows and doors on the 4th floor of zone A as the hot rubber has been installed. JMB continues to pull conduits in the corridors of zone B.

| No. | Contact/Company | Workers | # | Man Hours | Location | |
|--|--|---------|-----|-----------|--|---|
| 2 | ADCO Drywall & Metal Framing | 22 | 8.0 | 176.0 | Level 1>Level 2>Level 3>Level 4 |  |
| <p>Comments: ADCO is working on Level 2,3,4 Zones C/D: Installing backing in progress. Level 2,3,4 Zones C/D: Framing fire doors at corridors are done, waiting for insulation to proceed to hang drywall on it. Exterior, Level 1, Zone A: Ext. Soffits Waiting for insulation inspection and all trades done to hang dens glass on it. Exterior, Level 1, Zone B: Ext. Soffits Waiting for insulation inspection and all trades done to hang dens glass on it. Exterior, Level 1, Zone C: Ext. Soffits Waiting for insulation inspection and all trades done to hang dens glass on it. Exterior, Level 1, Zone D: Ext. Soffits Waiting for insulation inspection and all trades done to hang dens glass on it. Exterior, all levels, all zone A: Wing walls, Dens glass, done. Exterior, all levels, Zones B,C,D: Exterior, on wing walls waiting for insulation to proceed to hang dens glass on it. Cleaning all levels where we are working in progress.</p> | | | | | | |
| 3 | CJS Plumbing Inc. | 16 | 8.0 | 128.0 | Level 1>Level 2>Level 3>Level 4 | |
| <p>Comments: CJS continues to run water supplies through zone C and D. They have completed roof drain throughout the entire building.</p> | | | | | | |
| 4 | McKimmey Electric Inc | 7 | 8.0 | 56.0 | Level 1>Level 2>Level 3>Level 4 | |
| <p>Comments: JMB continues to pull conduits in the corridors of zone B.</p> | | | | | | |
| 5 | Kenyon Plastering of Livermore, Inc. | 4 | 8.0 | 32.0 | Level 1>Level 2>Level 3>Level 4 | |
| <p>Comments: Kenyon continues to run Tyvek around the building. They can only complete 1st through 3rd floors. They are way out in front of zone A. They have made it all the way through the courtyard and around to the New Berry side of the building.</p> | | | | | | |
| 6 | Kodiak Roofing and Waterproofing Co. | 11 | 8.0 | 88.0 | Level 1>Level 2>Level 3>Level 4 | |
| <p>Comments: Kodiak has run all insulation and lower membrane throughout the final zone, Zone D. They need to weld TPO joints and finish final details of roofing to complete their job. They should finish late tomorrow.</p> | | | | | | |
| 7 | Lighthouse Windows, Inc | 4 | 8.0 | 32.0 | Level 1>Level 2>Level 3>Level 4 | |
| <p>Comments: Lighthouse continues to install windows and doors on the 4th floor of zone A as the hot rubber has been installed.</p> | | | | | | |
| 8 | Reaco Heating & Air Conditioning, Inc. | 11 | 8.0 | 88.0 | Level 1>Level 2>Level 3>Level 4 | |
| <p>Comments: Reaco continues to install flashing and z ducts throughout the building. Skyline was out verifying knife plates for the bolt on balconies.</p> | | | | | | |
| 9 | Tigre Firestop & Insulation | 3 | 8.0 | 24.0 | Level 1>Level 2>Level 3>Level 4 |  |
| <p>Comments: Tigre continues with monocoat fire proofing to stair and rated areas continues. We have been spraying areas and inspecting the areas every other day.</p> | | | | | | |

| No. | Contact/Company | Workers | # | Man Hours | Location |
|---|---------------------------------|-----------|--------------|-----------|--|
| 10 | Sid Ceballos Construction Inc | 3 | 8.0 | 24.0 | Level 1>Level 2>Level 3>Level 4 |
| Comments: Sid's team to go over the progress of the repairs they have been conducting on the 1st and 2nd levels. We walked the 2nd floor the areas they have been working on and found that they were still out of tolerance. Floors need to be flat within 1/4" per 10'. We will give them another opportunity to grind and fill areas. | | | | | |
| 11 | Automatic Fire Sprinklers, Inc. | 1 | 8.0 | 8.0 | Level 1>Level 2>Level 3>Level 4 |
| Comments: AFS continues to work through corridors in Zone A 2nd and 3rd floor. In preparation of insulation and R/C Channel installation. | | | | | |
| 12 | AUS Decking, Inc. | 9 | 8.0 | 72.0 | Level 2>Level 3>Level 4 |
| Comments: AUS is pouring gypcrete in zone C on floors 3 and 4. We should be moving on to zone D floors through 3 & 4. | | | | | |
| | | 97 | 776.0 | | |

Manpower Log's Attachments:

1. SRM Construction



[76F84F4E-06E5-4820-B9C2-931277DBA918.jpeg](#)



[933A275E-8F72-4A3A-A511-8A6CDBD86D8E.jpeg](#)



[9BAD9213-E42A-401D-A0AC-02EB0CDD89E8.jpeg](#)



[67A1F029-6682-4499-9847-C493274DED71.jpeg](#)



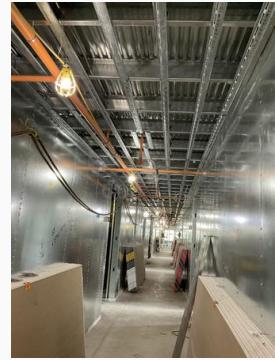
[C8FB00FE-056E-4B38-80F1-F6E2D7291ECC.jpeg](#)



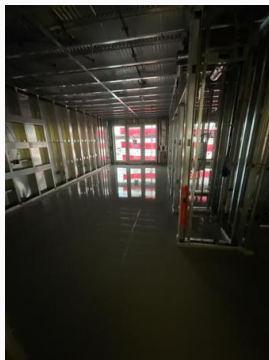
[85F695AE-BF14-4C8C-8FCC-B6A5C999E9B6.jpeg](#)



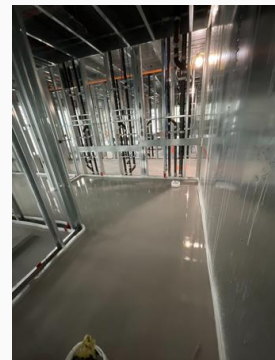
[44343405-0E60-4DA6-8FC5-E9975EF4194C.jpeg](#)



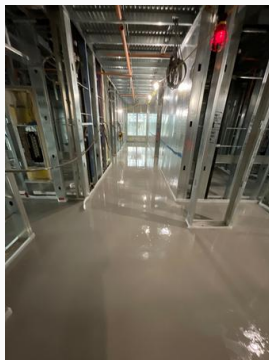
[58009A8D-7085-4225-AE53-FC71BBFE54E3.jpeg](#)



[80260E59-2BD8-4492-805D-335A174C89DB.jpeg](#)



[2216CFEB-0ED7-4E60-BD62-0456FD291020.jpeg](#)



[07B7F3B6-2F1A-449C-9349-DE1F6962A846.jpeg](#)



[9B934B69-A7A4-4A90-8A65-05E9A110D4BF.jpeg](#)



[6F0C8C88-53C1-44A2-95EA-D9C8E877D3EE.jpeg](#)

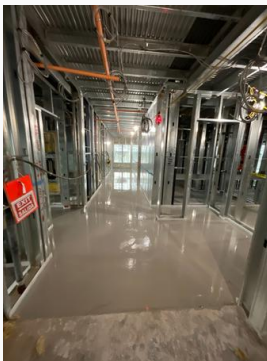
2. ADCO Drywall & Metal Framing



[8C2F885F-A73A-4F34-A350-9A561DD69CF5.jpeg](#)



[F8A331D5-1E07-42FC-B523-296D564D223C.jpeg](#)



[D563816E-F9D3-4CF8-84AC-EB6021C43FE0.jpeg](#)



[36DAA086-CC85-4149-8F65-8DA9D66792A7.jpeg](#)



[75F4C8D0-5168-4649-87EE-B20783230FFF.jpeg](#)

9. Tigre Firestop & Insulation



[83DA96D9-B43E-4362-9D20-33C3750E5530.jpeg](#)



[1F5764E1-A47B-49BB-84D8-1B9FE100999C.jpeg](#)



[F9CB24CE-C785-4F3B-AA7F-A59A0060C730.jpeg](#)



[9E9B136F-AC83-4FE6-B1DD-3C2CAF414159.jpeg](#)



[2CC72214-58F0-4D14-AC7E-2C50D65F9405.jpeg](#)

By _____

Date _____

Copies To _____