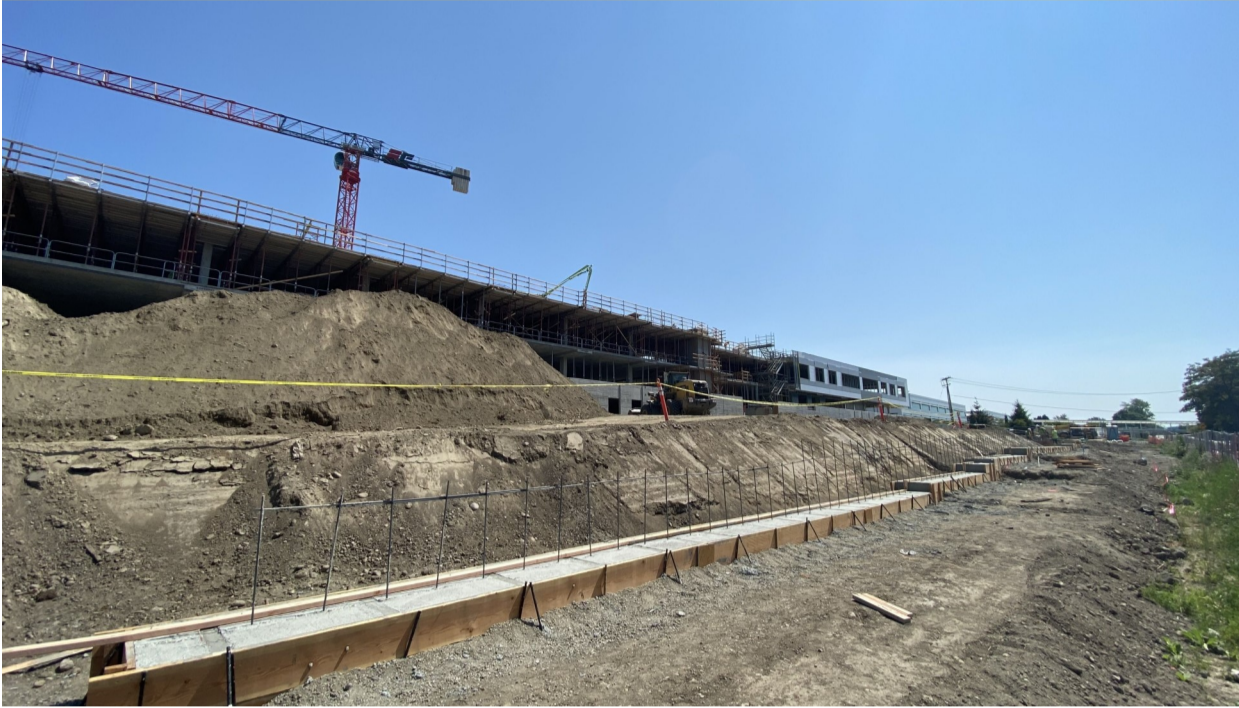


Construction Notice

Google Phase III Core and Shell | 509 6th St. S. | Construction Update August 2021



About the Project

Phase III of the Google Campus near downtown Kirkland will be a LEED V4 Gold Certified office building including approximately 135,000 square feet with two and a half levels of underground parking. This project is a continuation of the existing Google Campus, which contains nearly 400,000 square feet of additional office space and amenities to include a park that separates Phase I and II. As a part of the Phase III project, the park will be extended up to 6th St. S. There will also be a large roof deck with views of Lake Washington and the Olympic Mountains.

Scheduled completion date is 2nd Quarter 2022

Scheduled Work:

The last post-tensioned concrete deck placement will take place on August 6th, officially topping out the building! At the south half of the building, metal panel install is progressing north at the eastern elevation. Window frames are being installed, with glass set to deliver mid-August. Roofing, interior framing, and mechanical rough in are also progressing throughout the south half of the building. The on-campus pedestrian bridge is in a coordination phase as we work to begin fabrication off-site.

We anticipate a busy month for the Feriton Spur Park Improvements, with concrete wall pours, garden planter box install, water tower delivery, garden shed delivery, and splash pad construction all on the schedule. The caboose located in Phase I of the park will be relocated to Phase II of the park on August 17th.

Planned Street Interruptions:

During work hours, expect to see sidewalk closures and bike lane closures along the West edge of 6th St South as construction activities are serviced from the street. Flaggers may be required in 6th St South to allow trucks to safely travel around construction activities. Please follow all posted traffic control signs when the right-of-way is impacted.

Lane closures in 5th Pl S will be implemented in the coming weeks to accommodate relocation of the caboose. We greatly appreciate adherence to the trail reroute as we work to bring additional vibrance to the community center that is the CKC trail.

Safety:

We apologize for any inconveniences throughout the construction process. The safety of all employees, neighbors and the general public is our number one priority. Please be aware of changing conditions in the public right of way as sidewalk and street conditions are ever changing. Heavy equipment is entering and exiting the jobsite regularly. Please be aware of your surroundings and help us keep this project safe and free of injury. Thank you.

Contact Us

Craig Miller

Foushee Project Manager

425.957.2129

Larry Dixon

Foushee Superintendent

425.417.5238

Danielle Locklar

SRMKCCA Owner's Representative

831.277.8680

Dave Tomson

SRMKCCA Development Manager

509.991.1075

Hours of Operation

Monday through Friday

7:00am—8:00pm

Saturdays

9:00am—6:00pm

SRM
DEVELOPMENT

FOUSHÉE

Check back at www.srmdevelopment.com/srmkcca-phase-iii for continued updates and project information.