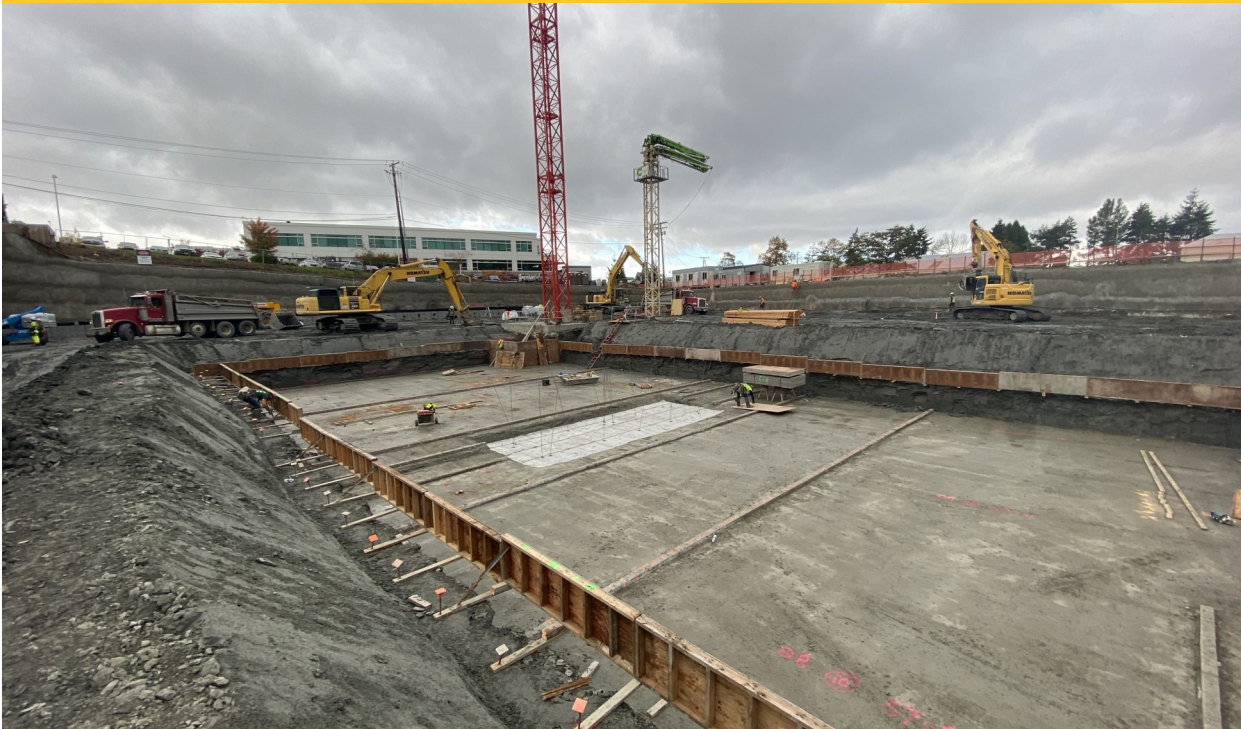


# Construction Notice

Google Phase III Core and Shell | 423-533 6th St. S. | Construction Update 11/04/20



## About the Project

Phase III of the Google Campus near downtown Kirkland will be a LEED V4 Gold Certified office building including approximately 135,000 square feet with two and a half levels of underground parking. This project is a continuation of the existing Google Campus, which contains nearly 400,000 square feet of additional office space and amenities to include a park that separates Phase I and II. As a part of the Phase III project, the park will be extended up to 6th St. S. There will also be a large roof deck with views of Lake Washington and the Olympic Mountains.

Scheduled completion date is 1st Quarter 2022

## Scheduled Work:

Dates: 11/04/20–11/18/20

The mass excavation and shoring scopes are complete while numerous other activities are ongoing: footing excavation, subgrade preparation, below grade and shoring wall waterproofing, footing forming and reinforcing. Concrete placement begins this week and will continue for approximately 11 months. Our largest footing on the project – totaling nearly 1,600 yards of concrete will be placed Saturday, November 7th. In order to get this much concrete placed in one day, an early start of 5am may be required. Measures will be taken to ensure noise stays at a reasonable level during this time. We apologize for any inconvenience.

## Planned Street Interruptions:

During work hours, expect to see sidewalk closures and bike lane closures throughout the coming weeks along the west edge of 6th St. S. as the earthwork subcontractor hauls off excavated soil and as material deliveries are unloaded. Please follow all of the posted traffic control signs when this occurs. Southbound 6th St. S. may be closed in the coming weeks as concrete is pumped from the street. At times, flaggers may also be required on 6th St. S. to allow trucks to safely travel around construction activities.

## Safety:

We apologize for any inconveniences throughout the construction process. The safety of all employees, neighbors and the general public is our number one priority. Please be aware of changing conditions in the public right of way as sidewalk and street conditions are ever changing. Heavy equipment is entering and exiting the jobsite regularly. Please be aware of your surroundings and help us keep this project safe and free of injury.

Thank you.

## Contact Us

**Craig Miller**

*Foushee Project Manager*

425.957.2129

**Larry Dixon**

*Foushee Superintendent*

425.417.5238

**Danielle Locklar**

*SRMKCCA Owner's Representative*

831.277.8680

**Dave Tomson**

*SRMKCCA Development Manager*

509.991.1075

## Hours of Operation

Monday through Friday

7:00am–8:00pm

Saturdays

9:00am–6:00pm

**SRM**  
DEVELOPMENT

**FOUSHÉE**

Check back at [www.srmdevelopment.com/srmkcca-phase-iii](http://www.srmdevelopment.com/srmkcca-phase-iii) for continued updates and project information.